



THE OMARA
COLLECTION



REFINED ACCESSORIES
FOR REFINED WASHROOMS

ASI[®]



THE OMARA COLLECTION

When you are looking for a collection in that rare space where form and function meet to satisfy your design needs, look no further than the **Omara** Collection by American Specialties Inc.

By including all the essential products needed in any elegant setting, ASI has simplified the specifying process once again.

The **Omara** Collection will exceed expectations in elegant hotel rooms, executive suites, luxury senior care facilities, country clubs, and spas or any other elegant setting.

With a styling that is at once minimalistic, contemporary and classic the **Omara** Collection subtly enhances any design. The robust construction made of type 304 stainless steel is LEED®-friendly and fits our sensibilities about longer lifecycle building designs.

The Omara Collection
Elegant, Rugged and Function Rich

REFINED ACCESSORIES F

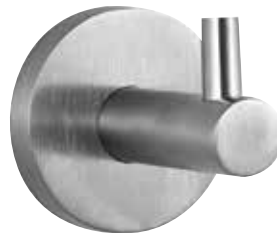


SOAP DISH WITH GLASS HOLDER

7313 Clear glass holder has raised ribs to elevate soap slightly above surface to promote drying. May be removed for cleaning. All other parts of the unit are fabricated of satin-finish stainless steel.

Refined look, rich function.

Overall size: 4⁵/₁₆" DIA (Ø107 mm) x 4⁷/₈" (124 mm)



SINGLE ROBE HOOK

7308 Extends 2⁵/₁₆" (59 mm) from wall or door. Suitable for robes, clothing, or small bags. Satin finish.

Minimalistic, rugged and elegant.



DOUBLE ROBE HOOK

7312 Two hooks, set apart at 90° on center, extend 2³/₈" (60 mm) from wall or door. Suitable for robes, clothing, or small bags. Satin finish.

High function, classic styling.

OR REFINED WASHROOMS



SINGLE TOILET PAPER ROLL HOLDER

7314 The toilet paper placed on this bail-type holder has unrestricted feed. Its design allows for easy replacement by maintenance or even guests. All exposed surfaces have a satin finish.

Paper bar is reversible to change handing.

Overall size:
5³/₁₆" (131 mm) x 3³/₈" (86 mm)
x 2⁹/₁₆" (65 mm)



RECESSED FACIAL TISSUE DISPENSER

0259-SS Dispenses 300 single-ply or 150 double-ply tissues. Faceplate of type 304 stainless steel satin finish.

Overall size: 11¹¹/₁₆" x 6³/₈"
(300 x 160 mm)



SINGLE TOILET PAPER ROLL HOLDER WITH HOOD

7314-H Similar to 7314 but with a satin-finish hood. Hood adds weight for easy tear and also protects paper roll from water droplets.

Overall size:
5⁷/₈" (149 mm) x 5" (127 mm)
x 2⁹/₁₆" (65 mm)



COVERED WASTE RECEPTACLE

7317 Freestanding covered garbage can. Lid opens by depressing foot pedal. Plastic pail with wire bail included. Satin-finish stainless steel. Capacity: 2 gal (7.6 L)

Overall size: 8⁹/₃₂" DIA (Ø210 mm)
x 12³/₄" (324 mm)



SPARE TOILET PAPER HOLDER

7316 Holds one roll of toilet paper. Extends 4" (102 mm) from wall. All exposed surfaces have a satin finish.

Overall size: 3³⁵/₆₄" DIA (Ø90 mm) x 6⁵/₈" (167 mm)



TOILET BRUSH AND HOLDER

7387 Tube handle, round splash guard and storage cylinder of this wall-mounted unit are fabricated of satin-finish stainless steel. Includes a drip cup at the bottom for easy cleaning. Brush is made of PVC with a polypropylene shaft. 15¹/₂" (394 mm) from bottom of base to top of handle and extends 5¹/₈" (131 mm) from wall. Allows for easy cleaning while maintaining an elegant washroom.

7388 Similar to 7387 but freestanding. 15" (381 mm) from bottom of base to top of handle (*not shown*).



TOWEL SHELF WITH TOWEL BAR

7311 Heavy-duty unit with $\frac{3}{4}$ " and $\frac{3}{8}$ " diameter type 304 stainless steel tubing. Bright finish only. Available 20" (510 mm) and 24" (610 mm).

Overall height: 6 $\frac{1}{2}$ " (165 mm); extends 8" (200 mm) from wall



TOWEL RING

7306 Designed for hand towels, this 7" DIA (Ø178 mm) towel ring is formed from a $\frac{3}{8}$ " DIA (Ø9.5 mm) satin-finish stainless steel tube. Extends 2 $\frac{1}{2}$ " (64 mm) from wall.



SURFACE-MOUNTED RETRACTABLE CLOTHES LINE

0712 Polished stainless steel unit has spring actuated 6' (1829 mm) vinyl cord with white vinyl knob and locking nut to hold stretched line taut. Installs over bathtub or in shower.



ROUND TOWEL BAR

7307 Satin-finish stainless steel tube and posts with round mounting brackets on ends. Extends 2 $\frac{5}{8}$ " (67 mm) from wall.

7307-18 $\frac{5}{8}$ " DIA (Ø16 mm) x 18" (457 mm)

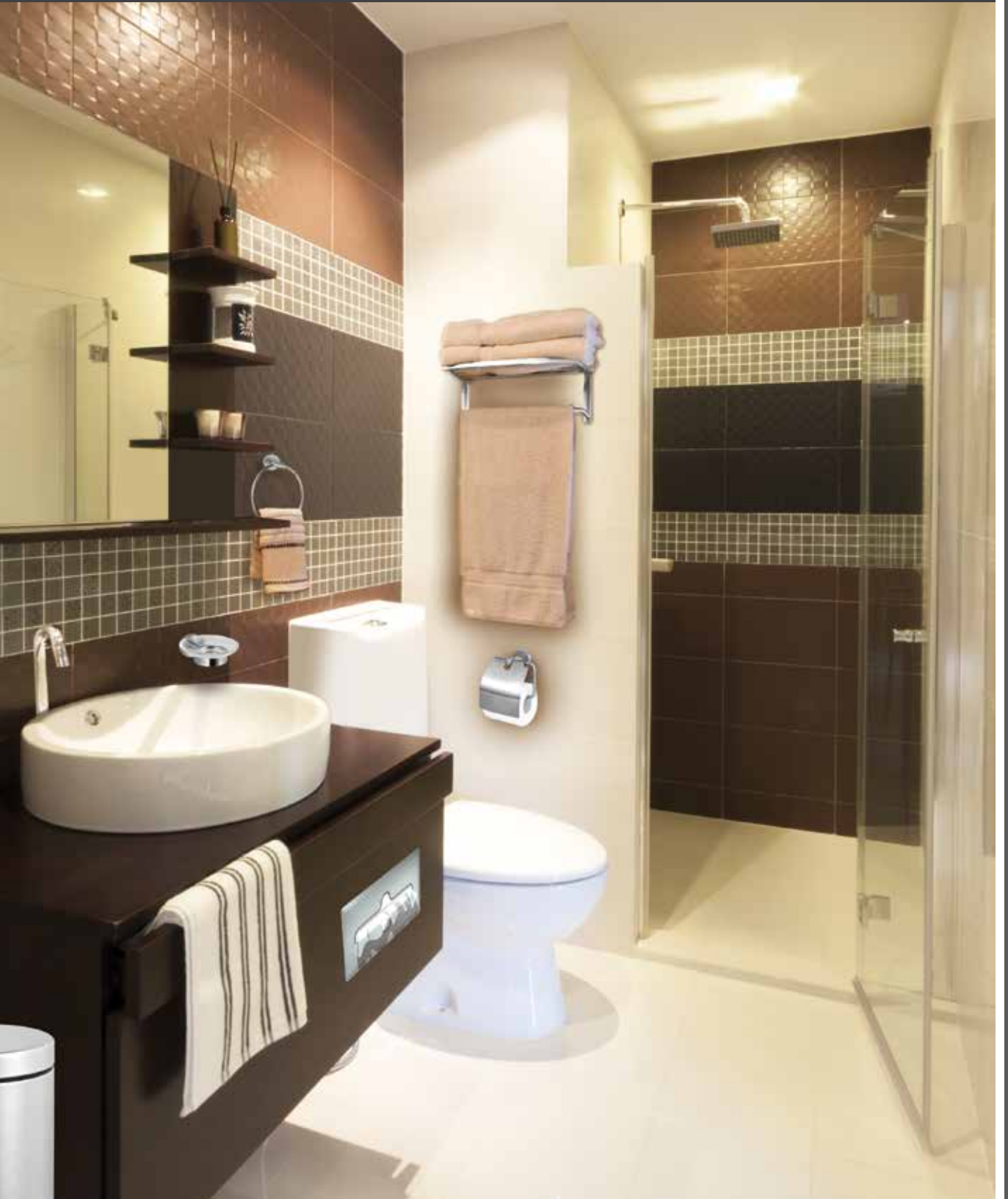
7307-24 $\frac{5}{8}$ " DIA (Ø67 mm) x 24" (610 mm)



CURVED SHOWER CURTAIN ROD WITH MOUNTING BRACKETS

1201 Fabricated of type 304 stainless steel. Tubing is 18 gauge, 1" DIA (Ø25 mm) with a satin finish. Length is suitable for a 60" (1524 mm) wide enclosure either on opposite walls or across the face opening depending upon rod length chosen.

**THE OMARA COLLECTION FOR ELEGANCE,
REFINEMENT & STYLE.**



THE ASI GROUP

The ASI Group is your single source solution for Washroom Accessories, Toilet Partitions, Lockers and other storage products worldwide.

Partitions — The most complete line available in the industry — stainless steel, solid plastic, powder coated steel, phenolic, color-thru phenolic and plastic laminate partitions. Since 1957, we have offered designers worldwide a myriad of choices to satisfy every need.

Lockers — The best engineered lockers and shelving in the industry, period. A wide range of colors and materials (including steel, solid plastic and phenolic) offer the perfect solution for any storage application.

Our mission is to make our customers successful by providing value that exceeds price and an excellent service experience. We do this by providing superior design, the broadest range of quality products in the industry, and state-of-the-art manufacturing to ensure that we have whatever our customers need, whenever they need it.

With experienced architectural representatives and customer service teams, we are here to help you deliver on projects that range from world-class office buildings, educational facilities, sports venues, and government buildings to hospitals, chain stores, and hospitality / entertainment complexes.

American Specialties, Inc., Global Partitions, Accurate Partitions Corp. and ASI Storage Solutions are all part of the ASI Group of companies.



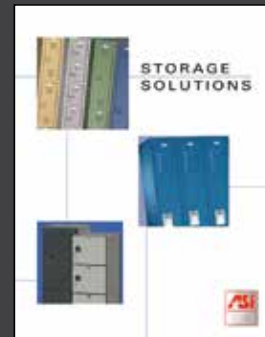
americanspecialties.com
for our complete line of
washroom accessories



globalpartitions.com



accuratepartitions.com



asistorage.com

ASI GUARANTEE

Products are guaranteed to be free from defects in workmanship and material for a period of one year from date of purchase. Any products returned under this guarantee will be repaired or replaced at no charge.



American Specialties, Inc.
441 Saw Mill River Rd, Yonkers, NY 10701
Tel: 914.476.9000 Fax: 914.476.0688
E-mail: info@americanspecialties.com Web: americanspecialties.com

