

Acorn Controls for bather safety and comfort

# SHOWERING & TEMPERING PRODUCTS



ACORN

**CONTROLS™**



Est. 1954

A Division of Acorn Engineering Company

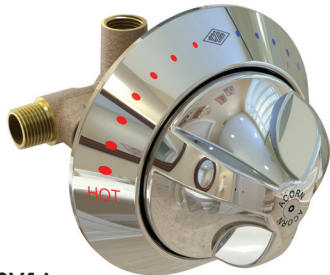


# ACORN CONTROLS

## COMPLETE LINE OF SHOWERING AND TEMPERING PRODUCTS

### Introduction

Acorn Engineering Company, a member of Morris Group International, proudly introduces its new division—Acorn Controls. Utilizing Acorn's 60 years of experience providing safe showers for schools, prisons, health clubs and office buildings, the Acorn Controls division represents a new line of safe showering and tempering products designed for the most challenging demands of all commercial, multi-family residential and industrial facilities.



**SV16**  
Shower Valve



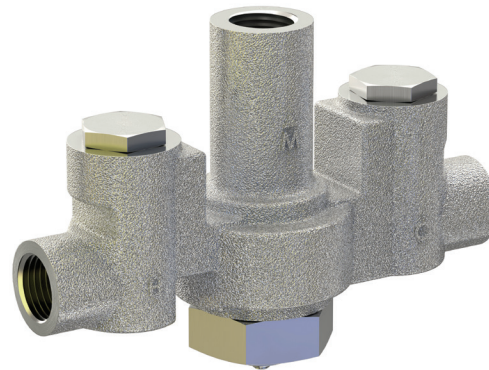
**ST70**  
Sink and Lavatory  
Tempering Valve



**ST7069**  
Shower and Lavatory  
Tempering Valve



**ET71**  
Emergency Tempering Valve



**MV17**  
Hi-Lo Master Mixing Valve

### Our Products

All valves are **patent pending** and include state-of-the-art thermostatic sensors with fast response and long term reliability for the highest level of protection against hot or cold water supply temperature changes and pressure variations.

Setpoint adjustment limit stop (shower valve) or locking mechanisms (all other products) help prevent dangerous conditions or unauthorized setpoint changes.

Thermostatic point-of-use products permit the use of higher recirculation temperatures to protect against Legionella without increasing the risk of scalding.

### Listings & Approvals

**Acorn Controls offers a complete line of lead-free\* products that meet or exceed the following standards:**

ASSE 1016-2011

ASSE 1070-2004

ASSE 1071-2008

ASME A112-18.1-2011

ASSE 1017-2009

ASSE 1069-2005

ANSI/ISEA Z358.1 -2009

CSA B125.3-11

See page 6 for an in-depth explanation of relevant ASSE standards

\*(less than .25% of wetted surfaces by weight)



## Master Mixers - with Hi-Lo certification

- » Certified to ASSE 1017 by IAPMO at flow rates much lower than required by the standard.
- » Hi-Lo performance, greatly exceeding the ASSE 1017 temperature control requirements, is STANDARD.
- » Cost competitive with Master Mixers that, as tested to the ASSE 1017 standard, need much higher flow rates for accurate control.
- » Available in 5 models/sizes with up to 225 GPM capacity, 1/2" to 2" NPT connections.
- » Available in pre-piped supply fixture assemblies, single or multi-valve, that include cabinets, shut-off valves and other options.

## Lavatory Tempering Valves

- » ASSE 1070-2004 certified by IAPMO at .4 GPM.
- » Provides temperature and pressure protection for users of public and private faucets.
- » Integral checks and screens.
- » 1/2" NPT or 3/8" compression connections.

## Shower Valves

- » Certified to ASSE 1016-2011 T/P by IAPMO at 1.25 GPM.
- » Ceramic shut-off for long term reliability and ADA compliance throughout the entire temperature operating range.
- » Non-rising stem eliminates a potential pinch point.
- » Single piece replacement cartridge.

## Emergency Tempering Valves

- » ASSE 1071 certified by IAPMO; exceeds the standard for control accuracy.
- » For eye, face, body and combination safety devices.
- » Available in 4 models/sizes with up to 150 GPM capacity, 1/2" to 1-1/2" NPT connections.
- » Available in pre-piped supply fixture assemblies, single or multi-valve, that include cabinets, shut-off valves and other options.

## Group Shower/ High Capacity Lavatory Tempering Valve

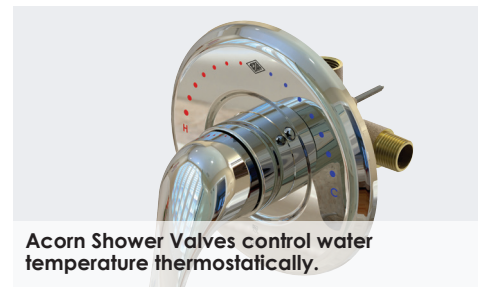
- » ASSE 1069 and 1070 certified by IAPMO for multiple group showers and/or faucets where the user does not control the temperature.
- » Dual certified for higher capacity lavatory tempering.
- » Providing 12 GPM @ 45 psid.
- » A variety of options for customization, including cabinets and pre-piped assemblies.



Master Mixer valves work on hot water distribution systems.



Lavatory tempering valves work with many styles of multi-station lavatories and wash basins.



Acorn Shower Valves control water temperature thermostatically.



Emergency Tempering Valves deliver tepid water to emergency eye/face washes and drench showers.



Superior bather comfort is now available for all users of Acorn Engineering showers.

# ACORN CONTROLS HISTORY

## Acorn Valves: A Track Record of Success

Acorn Engineering Company has been manufacturing valves for plumbing fixtures in our North American manufacturing facilities for over 40 years. This core product includes valves ideal for a variety of different applications in commercial and institutional markets. Acorn is introducing the newest generation of valves as a part of our new division, Acorn Controls. Acorn Controls valves offer options for use with single fixtures, multiple fixtures or whole building water systems. Acorn is proud to continue its track record of providing valves while updating the product line with state-of-the-art technology that keeps people safe.

**1969:** Acorn Engineering Company debuts their valve product line, which includes **Auto-Cloz, Single-Trol and Saffi-Trol valves**.

**1971:** Acorn introduces the **Penal-Trol valve** for institutional applications.

**1975:** Acorn acquires **Logan Manufacturing Company** and begins selling Logan valves.

**1976:** Acorn introduces **Meter-Matic valves**.

**1979:** Acorn introduces **Flo-Cloz valves**.

**1981:** Acorn introduces the **second generation of Penal-Trol valves** for institutional applications.

**1984:** A **brass Air-Control valve** is introduced.

**1986:** Acorn introduces new **Saffi-Trol valves**.

**1987:** A **brass Flood-Trol valve** is introduced.

**1988:** Acorn manufactures a piston operated valve.

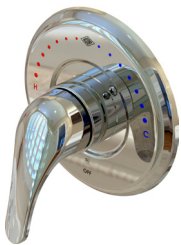
**1989:** Acorn introduces **Thermostatic Mixing Valves** to work with Wash-Ware products.

**1991:** **Time-Trol valves** are introduced.

**1992:** Acorn introduces **Master-Trol**, a water management system that allows the facility to precisely control and monitor water usage by means of a computer interface.

**1994:** Acorn introduces **non-metallic Air-Control and Flood-Trol valves**.

**2013:** Acorn introduces an **all new Controls line**, with state-of-the-art valves that manage single fixtures, multiple fixtures, or whole building water systems.



T/P Temperature-Pressure  
Balancing Mixing Valve  
Since 2013



Saffi-Trol valve  
Since 1986



Flo-Cloz valve  
Since 1979



Meter-Matic valve  
Since 1976



## The Water Saving Advantage

Acorn Controls thermostatic-only solutions for showering and lavatory tempering save water and reduce wait time when compared to Pressure Balancing shower valves and mechanical mixers commonly used for lavatory tempering. How? Thermostatic valves automatically draw only from the hot water supply until cold water is actually needed for achieving the desired set-point temperature. Because Pressure Balancing shower valves and mechanical mixers have no automatic limitation of the cold water supply, they not only waste cold water but slow the draw of hot water, causing a longer wait for the valve to reach the desired setpoint.

The longer the distance from the main recirculation loop or hot water supply to the valve, the greater the water savings and shorter the wait time for users of thermostatic vs. non-thermostatic solutions. In high use showering and lavatory facilities, like hospitals, universities and hotels, the thermostatic advantage can save thousands of gallons of water every year, while providing a much safer and more comfortable bathing experience.



# STANDARDS AND PRODUCT APPLICATIONS

## Standards

Acorn Controls Products	SV16 (see page 8)	ST70 & ST7069 (See page 10 & 11)	ET71 (see page 12)	MV17 (see page 13)	
<b>Standard</b>	<b>ASSE 1016-2011</b>	<b>ASSE 1069-2005</b>	<b>ASSE 1070-2004</b>	<b>ASSE 1071-2008</b>	<b>ASSE 1017-2009</b>
<b>Description</b>	Automatic Compensating Valves for Individual Showers and Tub/Shower Combinations	Automatic Temperature Control Mixing Valves	Water Temperature Limiting Devices	Temperature Actuated Mixing Valves for Plumbed Emergency Equipment	Temperature Actuated Mixing Valves for Hot Water Distribution Systems
<b>Application</b>	Showers and tub/shower combinations	Group showers and lavatory faucets	Sinks and Lavatories	Emergency eye washes, face washes, eye/face wash combinations and drench showers.	Hot Water Distribution Systems
<b>Outlet Temperature Range</b>	Cold to 120°F min	Minimum 100° to 115°F	Minimum 105° to 110°F	65° to 100°F max	Minimum 105° to 120°F
<b>Temperature Tolerance</b>	±3.6° F Type P and T/P – no spikes allowed Type T - spikes allowed	±3.6°F spikes allowed	±7.0° F	<7 GPM: - + 3°F, -5°F 7 to 20 GPM: - + 5°F, -8°F 20 to <40 GPM: - + 7°F, -12°F 40 GPM and over: - + 7°F, -15°F	3 to 5 GPM: - + or -3°F over 5 to 40 GPM: - + or -5°F over 40 GPM: - + or -7°F
<b>Pressure Change Test</b>	Type P and Type T/P: 50% change Type T: 20% change	20% up or down	20% up or down	Non-applicable	Non-applicable
<b>Supply Failure Requirements</b>	The device must automatically change the flow to no more than .5 GPM or 30% of the manufacturer's stated minimum flow, whichever is less, before the outlet temperature reaches 120° F.	The device must automatically change the flow to no more than .5 GPM or 1 GPM (for devices 1" or larger) before the outlet temperature reaches 120° F.	Must reduce flow to .2GPM or 20% of minimum flow before water reaches 120° F.	Upon loss of hot water, cold water should continue to flow at 30.0 psi differential pressure.  Upon loss of cold water, the hot water flow cannot exceed .5, 1, 1.5 or 2 GPM. The value that applies is determined by the capacity of the mixing valve.	Non-applicable
<b>Flow Rate Requirement</b>	Minimum advertised flow or 2.5 GPM, whichever is less.	Minimum advertised flow or 2.5 GPM, whichever is less.	Minimum advertised flow.	Minimum advertised flow or 3 GPM, whichever is less.	50% of flow at 10 psid.
<b>Classification</b>	Point of Use	Point of Use	Point of Use	Point of use or point of distribution	Point of Source
<b>Valve Type</b>	Pressure Balancing and/or Thermostatic	Thermostatic	Thermostatic	Thermostatic	Thermostatic



## Product Applications

Acorn Controls products are featured in products manufactured by other divisions and partnerships of Acorn Engineering and Morris Group International.

### Safety Products and Emergency Tempering Valves

Only Acorn Safety products offer you the complete line of Acorn Controls **ET71 Emergency Tempering Valves**. Acorn Controls are optionally available with these Acorn Safety Products:

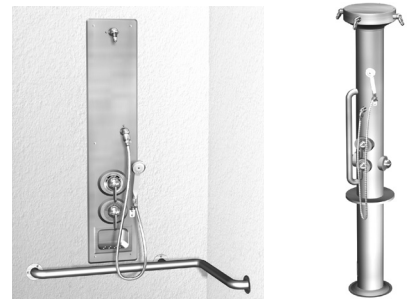
- » Eye-Face Washes
- » Emergency Showers and Combination Units
- » Drench Hoses
- » Barrier-Free Units



### Shower, Group Hand Washing, and Lavatories Products

The **SV16 T/P shower valve** and **ST7069 group shower** valve offer the highest level of bather protection in:

- » Acme and Apex Shower Lines
- » Security Wall Cabinets
- » Column Showers



The **ST70 and ST7069 lavatory tempering valves** offer safe and comfortable hand washing in single or multi-lavatory assemblies, including:

- » Hand Wash Stations
- » Wash Basins
- » Solid Surface Sinks
- » Security, Heavy Duty and Replacement Lavatories



The **ST7069 tempering valves** offer safe and reliable control of water temperature for filling hydrotherapy whirlpools from Whitehall Manufacturing.



# Model SV16 - Shower Valve



## Function:

SV16 is a thermostatic-based Temperature/Pressure compensating Shower Valve.

## Standards:

- » ASSE 1016-2011
- » CSA B125.1-2011
- » ASME A112.18.1-2011
- » cUPC
- » Lead-Free



## Product Features & Benefits:

- » Exceeds the setpoint control test requirements of ASSE 1016-2011, T/P at 1.25 GPM as certified by IAPMO Lab tests.
- » Temperature limit stop is factory set to help prevent an unsafe maximum bath temperature, even if the installer forgets to check and/or adjust it.
- » Allows a bath temperature within 10 degrees of the hot water supply temperature, which is critical to comfortable bathing when low hot water supply temperatures are required by code or as a means to prevent scalding.\*
- » Non-binding ceramic shut-off with non-rising stem ensures long-term reliability, eliminates the gap between the handle and faceplate to reduce the risk of pinching, and provides ADA compliance throughout the entire temperature operating range.
- » Integral check stops allow for valve servicing and access to the integral screens for cleaning of trapped debris.
- » Field reversible cartridge eliminates the need for cross-piping in back-to-back installations and helps easily rectify a reverse piping installation error.
- » Thermostatic control is recommended by the CDC and ASHRAE in publications addressing higher hot water supply temperatures as one means of controlling the spread of Legionella.
- » Comparable in cost to commercial grade Pressure Balance (only) shower valves.
- » Available in either standard Ligature Resistant trim or Lever Handle trim, both all metal.
- » **Ideal for use with:** Standard T/P valve for all Acorn Shower-Ware products and systems.

Attribute	Value
Flow Rate	4 GPM @ 45 psid
Temperature Adjustment Range	85 to 115°F
Minimum Hot Water temperature required	10°F above setpoint
Maximum Hot Water Temperature	180°F
Maximum Supply Pressure	125 psi

PATENT PENDING

\* Typically based on scalding concerns relating to the common use of Pressure Balancing valves and/or no scald protection at the faucet. Maintaining a minimum of 124° F throughout the domestic hot water recirculating system is recommended by the CDC, ASRAE, OSHA, AWT and others in published documents relating to Legionella control and prevention.



# Model SV16 - Product Options and Accessories

## Showerheads:

- » 1.5 or 2.5 GPM Chrome Plated Brass Conical Ligature-Resistant Showerhead
- » 1.5 or 2.5 GPM Chrome Plated ABS Economy Showerhead
- » 1.5 or 2.5GPM Large Chrome Plated Brass Showerhead
- » 1.5 or 2.5 GPM Chrome Plated Brass Showerhead

## Showerhead Connection:

- » Deluxe Arm and Flange

## Tub Spouts:

- » Tub Spout, Chrome Plated Brass w/ Divert. & 1/2" NPT or 3/4" NPT Adapter
- » Tub Spout, Chrome Plated Zinc w/ Divert. & 1/2" NPT or 3/4" NPT Adapter
- » Tub Spout, Chrome Plated Brass w/ Divert. & 1/2" Slip Fit Connection
- » Tub Spout, Chrome Plated Zinc, No Divert. w/ 1/2" NPT Connection

## Handheld Shower Handles:

- » 1.5 or 2.5 GPM Chrome Handheld Shower
- » 1.5 or 2.5 GPM White Handheld Shower

## Handheld Shower Hose:

- » 60" Stainless Steel or Vinyl Handheld Shower Hose

## Handheld Mounting:

- » 24" or 30" Glide Rail
- » Handheld Grab Bar Mounting Bracket
- » Handheld Wall Mounting Bracket

## Diverter:

- » Diverter Valve
- » Inline 3 Port Diverter Valve

## Grab Bars:

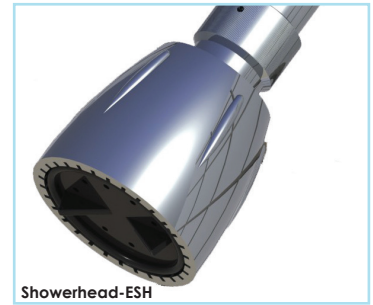
- » 24" or 36" Grab Bar

## Vacuum Breaker:

- » Exposed Elevated Vacuum Breaker
- » Inline Vacuum Breaker

## Handheld Supply Connection:

- » Handheld Supply Elbow



Showerhead-ESH



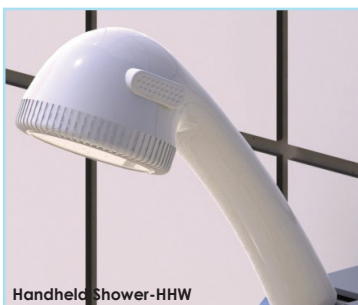
Inline 3 Port Diverter Valve-IDIV



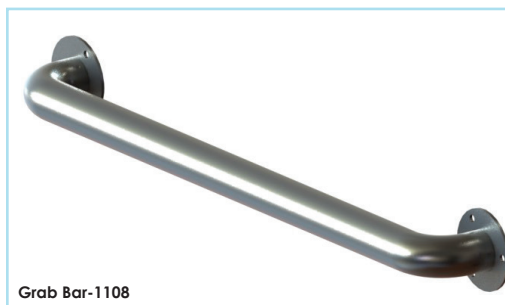
Handheld Grab Bar Mounting Bracket-HHGB



Handheld Supply Elbow-IHSE



Handheld Shower-HHW

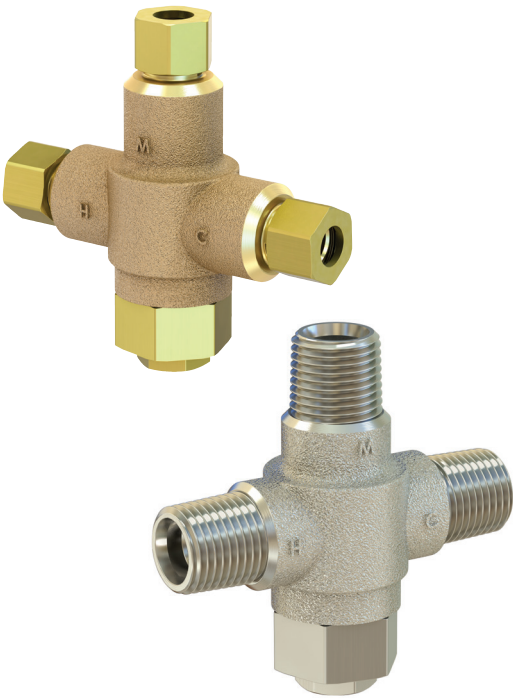


Grab Bar-1108



Tub Spout-TUB1

# Model ST70 - Tempering Valve



## Function:

ST70 is a valve intended for use with single or multi-station sinks and lavatories.

## Standards:

- » ASSE 1070-2004 @ .4 GPM
- » CSA B125.3-2011
- » cUPC
- » Lead-Free



## Product Features & Benefits:

- » Lead-Free Brass valve with corrosion-resistant internal components. Brass or chrome plate finish.
- » ST70: IAPMO Lab Certified to ASSE 1070 at .4 GPM, for excellent control accuracy to a single 1/2 GPM faucet.
- » Allen wrench temperature adjustment and locknut resists tampering.
- » Integral checks and screens improve reliability and safe performance.
- » Maximum Setpoint for ASSE 1070 performance: 115° F.\*
- » 1/2" NPT or 3/8" compression connections.
- » Tamper-resistant lock nut, factory set at 105° F, resists unauthorized setpoint changes.
- » Available in chrome plated finish.
- » **Ideal for use with:** Acorn lavatories and combys, Whitehall Manufacturing Patient Care Units, and Chromomite Instantaneous Electric Water Heaters.

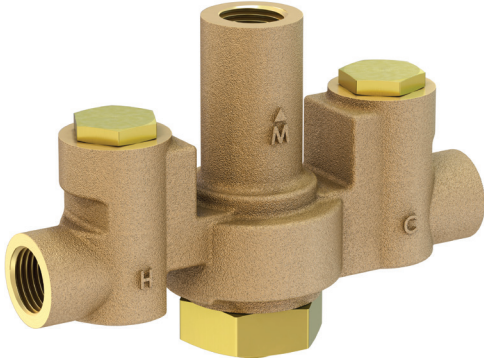
Attribute	Value
<b>Flow Rate</b>	ST70-12: 4.5 GPM @ 45 psid ST70-38: 4.0 GPM @ 45 psid
<b>Temperature Adjustment Range</b>	85 to 115°F
<b>Minimum Hot Water temperature required</b>	5°F above setpoint under normal operating conditions
<b>Maximum Hot Water Temperature</b>	180°F
<b>Maximum Supply Pressure</b>	125 psi

PATENT PENDING

\* Locknut can be used to lock setpoint anywhere between 85° F to 115° F.



# Model ST7069 - Showering & Lavatory Tempering Valve



## Function:

ST7069 is intended for use with group showers, sinks and lavatories.

## Standards:

- » ASSE 1069-2005 @ .5GPM
- » ASSE 1070-2004 @ .5 GPM
- » cUPC
- » Lead-Free



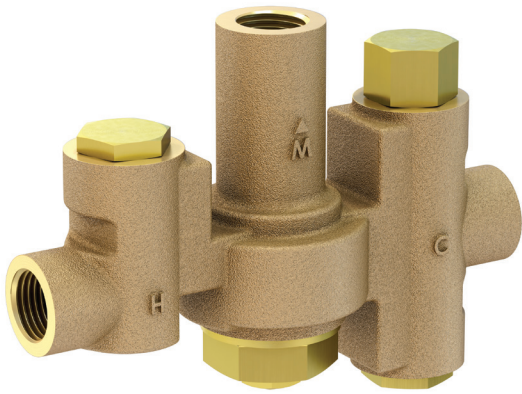
## Product Features & Benefits:

- » Lead-Free Brass with corrosion-resistant internal components.
- » IAPMO Lab Certified to ASSE 1070 at .5 GPM, for excellent control accuracy of a single 1/2 GPM faucet.
- » IAPMO Lab Certified to ASSE 1069 at .5 GPM for excellent control of a single, fixed temperature shower.
- » Integral screens are accessible for cleaning.
- » Integral checks.
- » 1/2 NPT connections.
- » Allen wrench setpoint adjustment and lock nut resists unauthorized setpoint changes.
- » Optional inlet ball valves and outlet gauge are available.
- » **Ideal for use with:** Acorn Group Showers and Whitehall Hydrotherapy Tubs.

Attribute	Value
Flow Rate	12 GPM @ 45 psid (handles up to 24 low flow faucets or 8 fixed temperature showers)
Temperature Adjustment Range	90 to 115°F
Minimum Hot Water temperature required	10°F above setpoint under normal operating conditions
Maximum Hot Water Temperature	180°F
Maximum Supply Pressure	125 psi

PATENT PENDING

# Model ET71 - Emergency Tempering Valves



## Function:

ET-71 is intended for use with emergency eye washes, face washes, eye/face wash combinations, and drench showers.

## Standards:

- » ASSE 1071
- » cUPC
- » Lead-Free



## Product Features & Benefits:

- » Lead-Free Brass with corrosion-resistant internal components.
- » IAPMO Lab Certified to ASSE 1071 at 1.5 GPM for model ET71-1 and 3 GPM for all other models.
- » The ET71 is capable of exceeding the temperature control accuracy requirements of ASSE 1071 at **zero** draw, i.e. user demand. The system must include a continuously operating recirculation pump capable of meeting the minimum flow rate of 1 to 3 GPM (based on the model) with a properly adjusted balancing valve. See the ET71 submittal sheet for more information.
- » Integral screens are accessible for cleaning without removing the valve from the line.
- » Integral checks are replaceable without removing the valve from the line.
- » 4 models ensure the flow rates you need for eye washes, face washes, drench showers and combination units.
- » Patent pending on demand cold water bypass ensures that hot water supply failure cannot prevent the cold water from reaching the safety device.
- » Connections: ET71-1, 1/2" IN and OUT- ET71-2, 3/4" IN, 1" OUT – ET71-3, 1" IN, 1-1/4" OUT and ET71-4, 1-1/4" IN and 1 1/2" NPT OUT.
- » Hex key setpoint adjustment and lock nut resists unauthorized setpoint changes.
- » Optional Outlet Temperature Gauge and Connection "T."
- » Unlike check stops that are standard with competitive products, optional Acorn supplied locking ball valves meet ANSI Z358 and ASSE 1071 requirements that state "if shut-off valves are installed in the supply like for maintenance purposes, provisions shall be made to prevent unauthorized shut-off." Acorn's design eliminates the need for a locked cabinet or other means to prevent unauthorized access to ununlockable and potentially unsafe check stop shut-off valves.
- » **Ideal for use with:** Acorn Safety Eye Washes, Eye/Face Washes, Drench Showers, and Combination Units.

Attribute	Value
Flow Rate	From Zero to 150 GPM @45 psid
Temperature Adjustment Range	60 to 95°F
Minimum Hot Water temperature required	5°F above setpoint
Maximum Hot Water Temperature	180°F
Maximum Supply Pressure	125 psi

PATENT PENDING





# Model MV17 - Hi-Lo Master Mixing Valves

## Function:

MV17 is intended for use in Hot Water Distribution Systems.

## Standards:

- » Far exceeds ASSE 1017 requirements
- » cUPC
- » Lead-Free



## Product Features & Benefits:

- » Available in lead-free brass or chrome plated brass with corrosion-resistant internal components.
- » IAPMO Lab Certified to ASSE 1017 with minimum flow rates as low as .5 GPM.
- » All valves provide Hi-Lo performance far below the requirements of the ASSE standard and equal or superior to other manufacturers' Hi-Lo valves.
- » All valves include ball valve shut off – a proven, superior method for shut-off which does not trap debris and eliminates the need for additional shut-off valves.
- » Integral screens are accessible for cleaning.
- » Integral checks.
- » 5 available models ensure the flow rates you need at the correct pressure differential.
- » Connections: MV17-1: 1/2", MV17-2: 3/4" in, 1" out, MV17-3: 1" in, 1-1/4" out, MV17-4: 1-1/4" in, 1-1/2" out", MV17-5: 1-1/2" in, 2" NPT out.
- » Allen wrench setpoint adjustment and lock nut resists unauthorized setpoint changes.
- » The MV17 is capable of exceeding the temperature control accuracy requirements of ASSE 1017 at **zero** draw, i.e. user demand. The system must include a continuously operating recirculation pump capable of meeting the minimum flow rate of .5 to 4 GPM (based on the model) with a properly adjusted balancing valve. See our MV17 submittal sheet for more information.

Attribute	Value
Flow Rate	Zero to 225 GPM @45 psid
Temperature Adjustment Range	100 to 160°F
Minimum Hot Water temperature required	5°F above setpoint
Maximum Hot Water Temperature	180°F
Maximum Supply Pressure	125 psi
Minimum Flow Rate, per ASSE 1017	MV17-1: 0.5 GPM MV17-2: 1 GPM MV17-3: 2 GPM MV17-4: 3 GPM MV17-5: 4 GPM

PATENT PENDING

# Supply Fixtures

Acorn provides the ability to order the ST7069 Group Shower/Lavatory Tempering Valve, the MV17 Master Mixer Series Valves and the ET71 Emergency Tempering Series Valves as Supply Fixtures.

Supply Fixtures are factory assembled and tested and include everything needed for installation into an optional cabinet, set up, service, and troubleshooting. Items included are:

- » Ball valves on the inlets and outlet
- » Outlet temperature gauge
- » Piping
- » Tempering valve with integral checks and strainers.

Cabinets are offered in wall-mounted and fully recessed versions, either painted or stainless steel with a piano hinge and lock. Other options include:

- » Cold water-by pass
- » Cabinet view port
- » Inlet temperature gauges.

Acorn is pleased to consider other modifications and options upon request.

## SFET Series

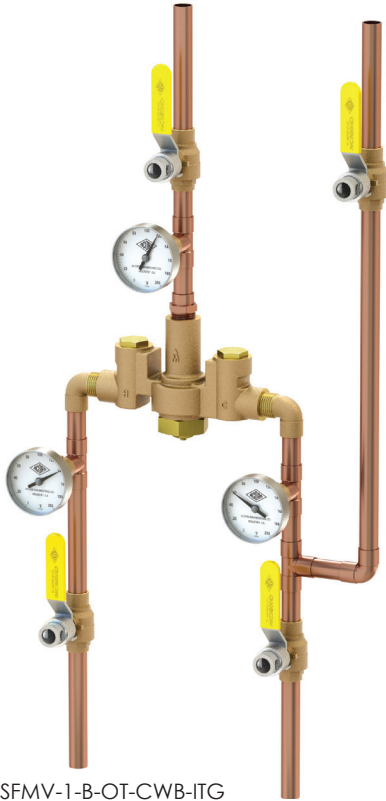


SFET-1-T-OT-ITG

### Features:

- » Lead-free supply fixtures based on ET71 Series Mixing Valves.
- » Delivers safe, tepid water to safety systems such as eye/face washes and drench showers.
- » 4 models/sizes based on minimum flow performance requirements and maximum flow demands.
- » Controls temperature for both recirculating and non-recirculating supply systems.

## SFMV Series



SFMV-1-B-OT-CWB-ITG

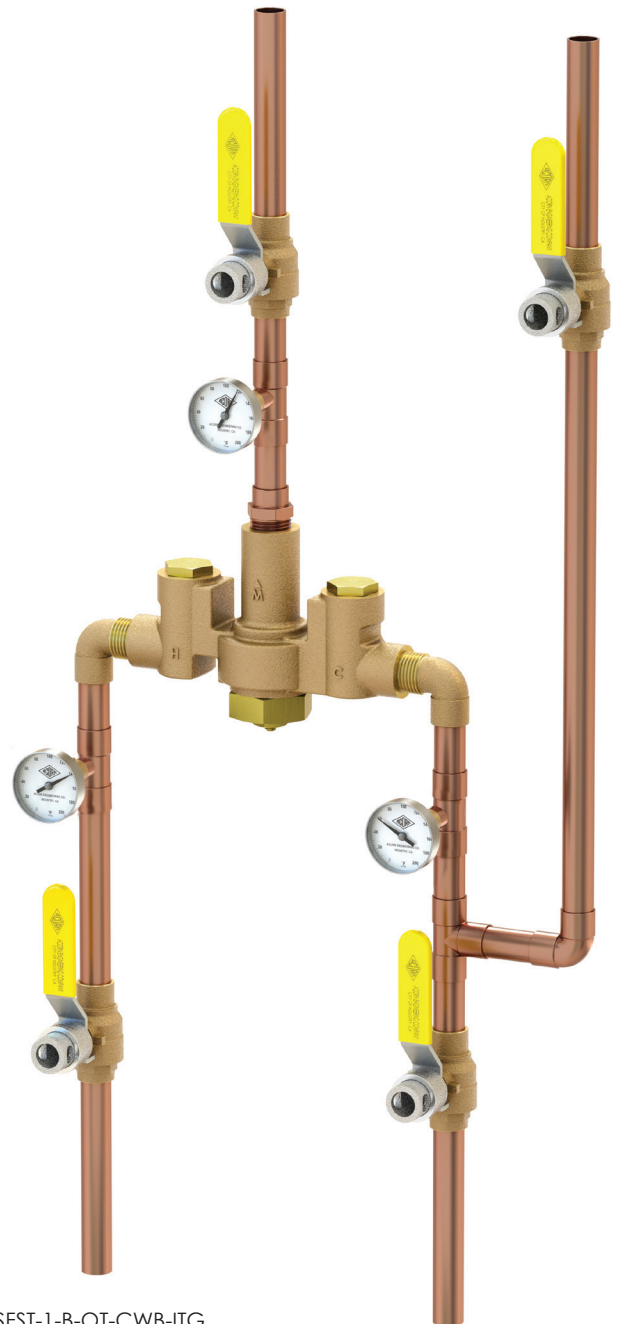
### Features:

- » Lead-free supply fixture based on MV17 Master Mixing Valves.
- » Controls temperatures in Hot Water Distribution Systems.
- » 5 models/sizes for small to large commercial applications.
- » Can be used with recirculating and non-recirculating systems, depending on specific fixture set up.

## SFST Series

### Features:

- » Lead-free supply fixtures based on the ST7069 Mixing Valve.
- » Delivers safe, tempered water to point of use fixtures such as sinks, baths and showers.
- » Ideal for commercial, institutional or residential applications.



SFST-1-B-OT-CWB-ITG





Est. 1954

## ACORN ENGINEERING COMPANY

Engineered Plumbing Products

P.O. Box 3527 • City of Industry, CA  
91744-0527 U.S.A.

800-488-8999 • 626-336-4561

Fax 626-961-2200

www.acorneng.com



## MORRIS GROUP INTERNATIONAL

www.morrisgroup.co

**Innovative Spirit and  
Engineering Foundation**

"What sets us apart from competitors is our engineering and spirit. We have a 'can-do' spirit. If you ask us to do something, we will do it or figure out how to do it. That's the part our customers like, that's the part we like."

- Don Morris, President and CEO

## MORRIS GROUP INTERNATIONAL

### ACORNGENCON PLASTICS

### ACORN-GENCON PLASTICS, LLC

Injection Molded Products

13818 Oaks Avenue • Chino, CA 91710 U.S.A.

Tel 909-591-8461 • Fax 909-628-7465

www.acorn-gencon.com



### ACORNVAC, INC.

Vacuum Plumbing Systems

13818 Oaks Avenue, Chino, CA 91710

Tel. 800-591-9920 • Tel. 909-902-1141 • Fax: 909-902-5041

www.acornvac.com



### CHRONOMITE LABORATORIES, INC.

Tankless Electric Water Heaters

P.O. Box 3527 • City of Industry, CA 91744-0527 U.S.A.

Tel 800-447-4962 • Fax 626-937-4279

www.chronomite.com



### ELMCO GROUP

Manufacturer Representatives

P.O. Box 3787, City of Industry, CA 91744

Tel 626-333-9942 • Fax 626-961-3813

www.morrisgroup.co



### MORRIS INDUSTRIES MEXICO

### MORRIS INDUSTRIES MEXICO, S. DE R.L. DE C.V.

Central and Latin America Manufacturing and Sales

Maquiladoras #1387-1 Col.Cd. Industrial Tijuana, B.C., C.P. 22444

Tel 011-52-664-623-4580 • Fax 011-52-664-623-4590

www.morrisgroup.co

### MORRIS



PROPERTY  
MANAGEMENT  
COMPANY

### MORRIS PROPERTY MANAGEMENT COMPANY

Construction, Interior Design, Landscaping and Maintenance

15058 Proctor Avenue • City of Industry, CA 91746

Tel 626-855-4888 • Fax 626-855-4864

www.morrispropertiesmgt.com



### MURDOCK MANUFACTURING

Drinking Fountains and Hydrants

P.O. Box 3527 • City of Industry, CA 91744-0527 U.S.A.

Tel 800-45-DRINK • 626-333-2543 • Fax 626-855-4860

www.murdockmfg.com



### POTTER ROEMER

Fire Protection Equipment

P.O. Box 3527 • City of Industry, CA 91744-0527 U.S.A.

Tel 800-366-3473 • Fax 626-937-4777

www.potterroemer.com

### SMITH



### JAY R. SMITH MFG. CO.®

Plumbing and Drainage Products

P.O. Box 3237 • Montgomery, AL 36109-0237

Tel 800-467-6484 • 334-277-8520 • Fax 334-272-7396

www.jrsmith.com



### WHITEHALL MANUFACTURING

Hospital and Rehabilitation Products

P.O. Box 3527 • City of Industry, CA 91744-0527 U.S.A.

Tel 800-782-7706 • 626-968-6681 • Fax 626-855-4862

www.whitehallmfg.com